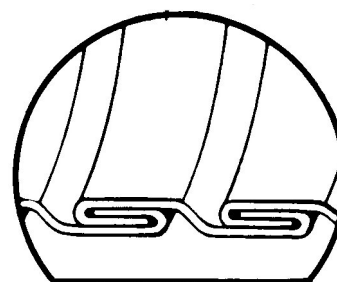


GALVANIZED

HEAVY WEIGHT

PART NO.	SIZE	I.D.	O.D.	INSIDE BENDING DAIMETER	WEIGHT PER FOOT
IT 25-1520	1-1/2"	1-1/2"	1-5/8"	14"	1.1
IT 25-17520	1-3/4"	1-3/4"	1-13/16"	16"	1.1
IT 25-2020	2"	2"	2-3/16"	17"	1.2
IT 25-22520	2-1/4"	2-1/4"	2-3/8"	18"	1.4
IT 25-2520	2-1/2"	2-1/2"	2-11/16"	22"	1.5
IT 25-27520	2-3/4"	2-3/4"	2-7/8"	25"	1.7
IT 25-3020	3"	3"	3-3/16"	28"	1.8
IT 25-3520	3-1/2"	3-1/2"	3-11/16"	32"	2.2
IT 25-4020	4"	4"	4-3/16"	34"	2.5
IT 25-5020	5"	5"	5-3/16"	45"	3.1
IT 25-6020	6"	6"	6-3/16"	55"	3.8

Narrow rib for greater flexibility, 4-ply interlock construction, will not unravel when you cut it. Electro-galvanized with heavy coating for longer service life. Unpacked 25' coil, .020 strip.



Cut-away-photo view and detail drawing of construction

EXTRA HEAVY

PART NO.	SIZE	I.D.	O.D.	INSIDE BENDING DAIMETER	WEIGHT PER FOOT
IT 25-3026	3"	3"	3-1/4"	27"	2.3
IT 25-3526	3-1/2"	3-1/2"	3-3/4"	32"	2.6
IT 25-4026	4"	4"	4-1/4"	36"	3.1
IT 25-5026	5"	5"	5-1/4"	45"	4.1
IT 25-6026	6"	6"	6-1/4"	54"	4.8
IT 25-8026-120	8"	8"	8/14"	72"	6.3
IT 25-1026-120	10"	10"	10-1/4"	90"	8.2

Narrow rib construction for greater flexibility and longer service life. Extra heavy electro-galvanized steel. Has same construction as .020 strip. Unpacked 25' coil, .026, 8" and 10" cut to 10' lengths only.

STAINLESS STEEL - Type 304 Stainless

EXTRA HEAVY

PART NO.	SIZE	I.D.	O.D.	INSIDE BENDING DAIMETER	WEIGHT PER FOOT
IT 302-2020	2"	2"	2-5/32"	17"	1.5
IT 302-2520	2-1/2"	2-1/2"	2-21/32"	22"	1.6
IT 302-3020	3"	3"	3-5/32"	28"	1.8
IT 302-3520	3-1/2"	3-1/2"	3-21/32"	32"	1.9
IT 302-4020	4"	4"	4-5/32"	34"	2.5
IT 302-5020	5"	5"	5-5/32"	45"	3.1
IT 302-6020	6"	6"	6-5/32"	55"	3.7
IT 302-8020-120	8"	8"	8-5/32"	68"	4.6
IT 302-1020-120	10"	10"	10-5/32"	90"	6.2

Narrow rib, flexible. Use in installations where high temperature is a factor, such as turbo-charger or exhaust manifold outlets, and for maximum service life. High resistance to heat, rust and corrosion. Unpacked 25' coil, .020 strip. 8" and 10" lengths only.