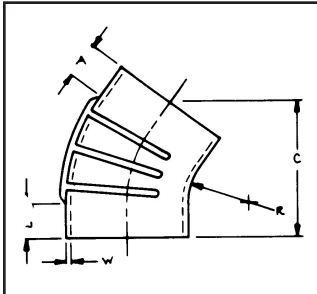
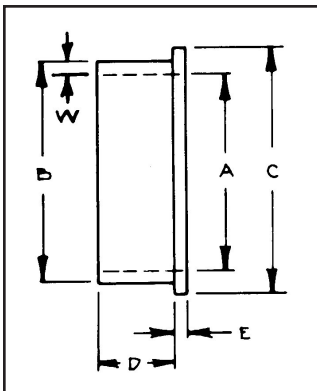


SPECIAL ELBOWS



PART NO.	DEGREE	I.D.	O.D.	A	B	C	R	W
IT 7-422	22	4.00	4.50	1.50	1.50	4.50	1.75	0.25
IT 7-4568	68	4.50	5.00	1.50	1.50	6.75	1.75	0.25
IT 7-5522	22	5.50	6.00	1.75	1.75	5.25	1.75	0.25
IT 7-5554	54	5.50	6.00	1.75	1.75	7.75	2.50	0.25
IT 7-5568	68	5.50	6.00	1.75	1.75	8.25	4.00	0.25
IT 7-622	22	6.00	6.50	1.75	1.75	5.25	1.75	0.25
IT 7-638	38	6.00	6.62	2.30	2.30	7.25	0.75	0.31
IT 7-654	54	6.00	6.50	1.50	1.50	7.50	2.50	0.25
IT 7-668	68	6.00	6.50	1.75	1.75	8.50	4.00	0.25
IT 7-722	22	7.00	0.62	1.75	1.75	5.49	5.56	0.31
IT 7-768	68	7.00	7.62	2.00	2.00	7.93	5.56	0.31
IT 7-7668	68	7 X 6	7.62	2.00	2.00	7.93	5.56	0.31
IT 7-863	63	8.00	8.75	2.00	2.00	11.00	1.25	0.37

REDUCER INSERT SLEEVE



PART NO.	A	B	C	D	E	W
IT 7-423	3.00	4.00	4.50	1.25	0.25	0.50
IT 7-4235	3.50	4.00	4.50	1.25	0.25	0.25
IT 7-4524	4.00	4.50	5.00	1.50	0.25	0.25
IT 7-524	4.00	5.00	5.50	1.50	0.25	0.50
IT 7-5524	4.00	5.50	6.00	1.50	0.25	0.25
IT 7-5245	4.50	5.00	5.50	1.50	0.25	0.25
IT 7-5525	5.00	5.50	6.00	1.50	0.25	0.25
IT 7-625	5.00	6.00	6.50	1.50	0.50	0.25
IT 7-6255	5.50	6.00	6.50	1.50	0.25	0.25
IT 7-726	6.00	7.00	7.50	1.50	0.25	0.50
IT 7-827	7.00	8.00	8.50	1.50	0.25	0.50

AIR INLET CLAMPS

PART NO.	MIN DIA.	PART NO.	MIN DIA.		
IT 8-20	2.06	2.31	IT 8-45	4.81	5.12
IT 8-225	2.38	2.69	IT 8-50	5.31	5.62
IT 8-25	2.56	2.87	IT 8-525	5.50	5.94
IT 8-275	3.00	3.31	IT 8-55	5.81	6.25
IT 8-30	3.25	3.56	IT 8-60	6.31	6.75
IT 8-325	3.50	3.91	IT 8-70	7.44	7.88
IT 8-35	3.81	4.12	IT 8-80	8.56	9.00
IT 8-40	4.31	4.62	IT 8-81	8.19	8.63
			IT 8-91	10.50	10.94

MAX DIA.

Permits flexible assembly of rubber elbows and aluminum tubing. Full circle clamping action. Stainless steel band, extra long (2-3/4") T-bolt

ALUMINUM TUBING

PART NO.	SIZE
IT 27-030	3"
IT 27-040	4"
IT 27-050	5"
IT 27-055	5-1/2"
IT 27-060	6"
IT 27-070	7"
IT 27-080	8"

Durable rust resistant, light weight for air inlet tubing. Furnished in 10' sections.